

PILANESBERG BUDGET SAFARI

Experience the thrill of an African safari without breaking the bank with our Budget Safari. Choose between a 2- or 3-day adventure exploring the renowned Pilanesberg National Park. Perfect for budget-conscious travellers seeking an exciting and immersive safari experience.

Accommodation: Bakgatla Resort inside the Park, or Sundown Country Estate near Ledig

ITINERARY

2-DAY SAFARI:

Day 1

- Pick-up in Johannesburg and transfer to Pilanesberg.
- Closed vehicle game drive upon arrival, followed by lunch and then check-in.
- Afternoon 3-hour closed* vehicle game drive, followed by dinner at the Resort (own expense).

Day 2

- Sunrise 3-hour closed* vehicle game drive, followed by breakfast and check-out.
- Final closed vehicle game drive with a stop for lunch before transferring back to Johannesburg.

*Upgrade to open vehicle drives are available upon request.

3-DAY SAFARI:

Day 1

- Pick-up in Johannesburg and transfer to Pilanesberg.
- Closed vehicle game drive upon arrival, followed by lunch and then check-in.
- Afternoon 3-hour closed* vehicle game drive, followed by dinner at the Resort (own expense).

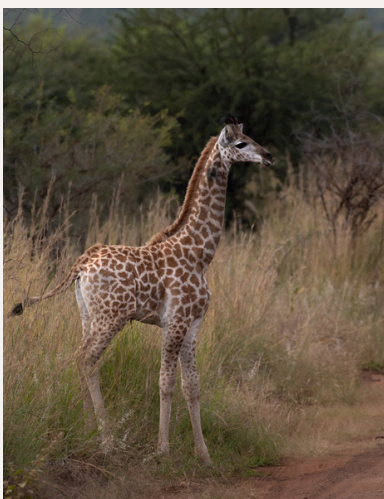
Day 2

- Sunrise 3-hour closed* vehicle game drive, followed by breakfast.
- Start your afternoon closed drive with lunch and continue on drive until gate close.
- End the day with dinner at the Resort (own expense).

Day 3

- Sunrise 3-hour closed* vehicle game drive, followed by breakfast and check-out.
- Final closed vehicle game drive with a stop for lunch before transferring back to Johannesburg.

*Upgrade to open vehicle drives are available upon request



CONTACT US

+27 83 601 9330 (Josh)

**ALL
OUT
SAFARIS**

Safari & Tour Operator

TERMS & CONDITIONS



INCLUDED IN RATES:

- Road transfers to and from the Park and Johannesburg
- Bakgatla option: all breakfasts and lunches with a soft drink/water
- Sundown option: all dinners and breakfasts with a soft drink/water
- All mentioned closed vehicle drives
- Park entrance fees

EXCLUDED FROM RATES:

- Air transfers
- Bakgatla option: all dinners
- Sundown option: all lunches
- Premium branded and alcoholic beverages, tea and coffee, and other beverages not mentioned
- Any open vehicle drives not previously booked, unless open drives are booked upon request
- Purchases from curio shops, etc.
- Activities not mentioned in the itineraries
- Amenities such as room service, laundry service, spa treatments and products, etc.
- Personal expenses
- Gratuities

BOOKING CONFIRMATIONS:

A minimum of 2 guests is required to make a booking. Confirmation of a booking is made in writing by the guests to All Out Safaris. A **50% non-refundable deposit** is required within 48 hours of confirmation of booking, unless specified otherwise. Where applicable, the balance of the payment of a booking is required 35 days prior to departure date. A 100% non-refundable payment is required if the booking is made less than 30 days prior to departure date.

No quotation issued by All Out Safaris and accepted by the guests shall be binding until such time as a final invoice has been issued by All Out Safaris.

CANCELLATION POLICY:

A fee will be charged for postponement of tours (the amount of which is dependant upon accommodation and other trade partner regulations). The tour can be undertaken within 1 year of original booking depending on accommodation availability. Depending on when you rebook your tour, there may be an increase in the price of the tour to cover the 2026 price increases.

Cancellation Fee Structure:

- Full refund if cancelled 30+ days prior to the start of the tour.
- 50% refund if cancelled 15-30 days prior to the tour.
- No refund if cancelled less than 14 days before the tour begins.

The refund EXCLUDES the applicable non-refundable deposit.

GROUP BOOKINGS:

- Any booking of 9 or more people is considered a group.
- All Terms & Conditions apply, except that a group discount of our own discretion may now apply.