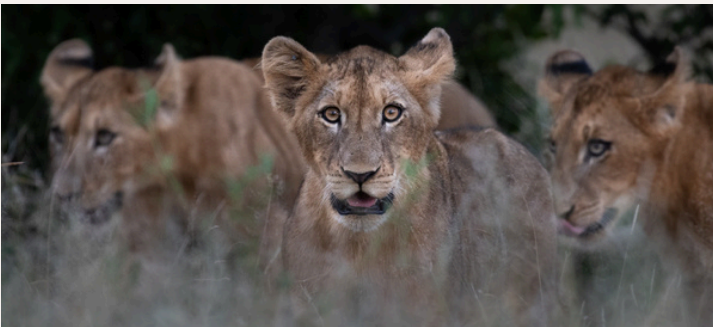
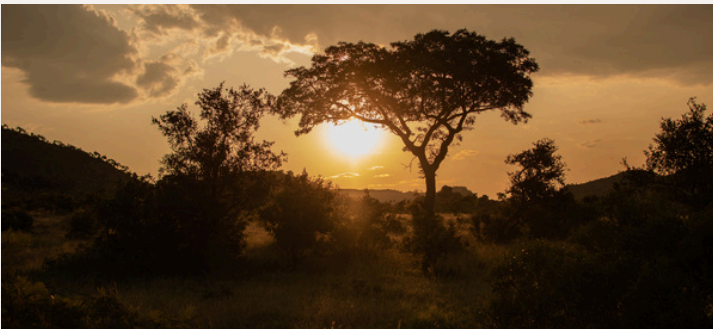


# CLASSIC KRUGER SAFARI

A 3-, 5-, or 7-day journey crafted for an authentic Kruger adventure. Whether you're a seasoned traveller or new to safaris, this classic safari offers the ideal balance of comfort and adventure, making it the perfect way to experience Kruger National Park at its finest.

**Accommodation: bungalows at a rest camp inside the Park or Riverview Inn on the Crocodile River (south border).**



# ITINERARY

## 3-DAY SAFARI:

### Day 1

- Pick-up in Johannesburg and transfer to the Kruger.
- Check-in and optional lunch (own expense).
- Enjoy an afternoon closed vehicle drive if you wish, and then end the day with dinner at the lodge.

### Day 2

- Enjoy a full-day open vehicle drive. The drive includes breakfast.
- Stop off for lunch (own expense).
- End your day off with dinner back at the lodge.

### Day 3

- Sunrise closed vehicle game drive, followed by breakfast and check-out.
- Optional lunch (own expense) while transferring back to Johannesburg.



## **5-DAY SAFARI:**

### **Day 1**

- Pick-up in Johannesburg and transfer to the Kruger.
- Check-in and optional lunch (own expense).
- Enjoy an afternoon closed vehicle drive if you wish, and then end the day with dinner at the lodge.

### **Day 2**

- Enjoy a full-day open vehicle drive. The drive includes breakfast.
- Stop off for lunch (own expense).
- End your day off with dinner back at the lodge.

### **Days 3-4**

- Enjoy a full-day closed vehicle drive. The drive includes breakfast.
- Stop off for lunch (own expense).
- End your day off with dinner back at the lodge.

### **Day 5**

- Sunrise closed vehicle game drive, followed by breakfast and check-out.
- Optional lunch (own expense) while transferring back to Johannesburg.



## 7-DAY SAFARI:

### Day 1

- Pick-up in Johannesburg and transfer to the Kruger.
- Check-in and optional lunch (own expense).
- Enjoy an afternoon closed vehicle drive if you wish, and then end the day with dinner at the lodge.

### Days 2-3

- Enjoy a full-day open vehicle drive. The drive includes breakfast.
- Stop off for lunch (own expense).
- End your day off with dinner back at the lodge.

### Days 4-6

- Enjoy a full-day closed vehicle drive. The drive includes breakfast.
- Stop off for lunch (own expense).
- End your day off with dinner back at the lodge.

### Day 7

- Sunrise closed vehicle game drive, followed by breakfast and check-out.
- Optional lunch (own expense) while transferring back to Johannesburg.



## CONTACT US

+27 83 601 9330 (Josh)

**ALL  
OUT  
SAFARIS**

Safari & Tour Operator

# TERMS & CONDITIONS



## INCLUDED IN RATES:

- Road transfers to and from the Park and Johannesburg
- All dinners and breakfasts with a soft drink/water
- All mentioned closed and open vehicle game drives
- Park entrance fees and levies

## EXCLUDED FROM RATES:

- Air transfers
- All lunches
- Premium branded and alcoholic beverages, tea and coffee, and other beverages not mentioned
- Any open vehicle game drives not previously booked as part of your tour
- Purchases from curio shops, etc.
- Activities not mentioned in the itineraries
- Amenities such as room service, laundry service, spa treatments and products, etc.
- Personal expenses
- Gratuities

## BOOKING CONFIRMATIONS:

A minimum of 2 guests is required to make a booking. Confirmation of a booking is made in writing by the guests to All Out Safaris. A **50% non-refundable deposit** is required within 48 hours of confirmation of booking, unless specified otherwise. Where applicable, the balance of the payment of a booking is required 35 days prior to departure date. A 100% non-refundable payment is required if the booking is made less than 30 days prior to departure date.

No quotation issued by All Out Safaris and accepted by the guests shall be binding until such time as a final invoice has been issued by All Out Safaris.

## CANCELLATION POLICY:

A cancellation fee is charged based on when guests cancel. Guests will forfeit the open vehicle drive payment, if applicable.

### Cancellation Fee Structure:

- Full refund if cancelled 30+ days prior to the start of the tour.
- 50% refund if cancelled 15-30 days prior to the tour.
- No refund if cancelled less than 14 days before the tour begins.

The refund EXCLUDES the applicable non-refundable deposit and the open vehicle drive amount.

## GROUP BOOKINGS:

- Any booking of 9 or more people is considered a group.
- All Terms & Conditions apply, except that a group discount of our own discretion may now apply.